



UAV CPU Module

The UAV CPU Module has been specifically designed to operate with our full line of 9000 series infrared cameras. It provides remote management of a 9320 or 9640 Infrared Camera, allowing for the collection of radiometric (temperature) data. This provides the images needed to create very highly detailed mosaics, offering exact temperature data for analysis. An additional visible or NIR camera can be incorporated into the system, along with a GPS module. While specifically designed to provide detailed data in the field of Precision Agriculture, this module has proven itself as a reliable means for collecting temperature data in many other applications.



Features

- Arm Processor
- 512MB Ram
- Linux Operating System
- Composite/HDMI Video Out
- Remote Triggers
- Fireproof Enclosure
- Small Size
- Light Weight
- Low Power

Applications

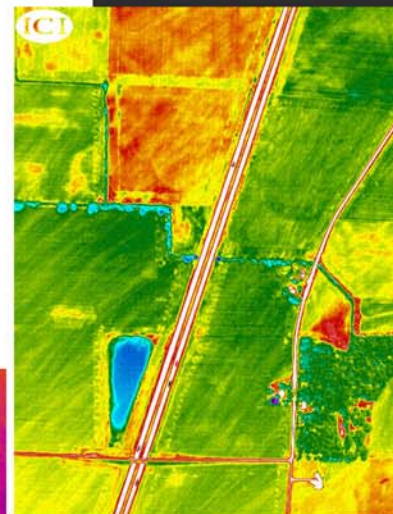
- Aerial Radiometric Imaging
- UAV/UAS Integration
- Robotics
- Building/Roof Inspections
- Search and Rescue
- Archeologic Mapping
- Precision Agriculture
- Industrial Inspection Systems
- Alternative Energy Inspections

Options & Accessories

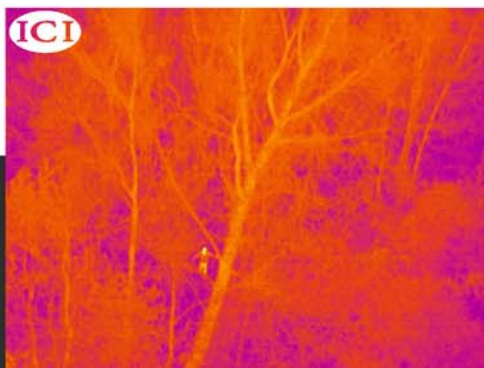
- 9320/9640 IR Cameras
- ICI SWIR P USB Camera
- Visible or NOIR Camera
- GPS Module
- 5VDC UBEC Power Adapter
- Image Capture Trigger
- Camera Selection Trigger

Specifications

- 700 MHz ARM1176JZF-S core
- 2 watts Power Consumption
- -20C to 60C Oper. Range
- ABS Protective Case
- 66 Channel GPS -165 dBm
- 101x72x30 (HxWxD +/- .5mm)
- 115 Grams - with GPS Module



Actual image taken with 9000 series camera



Actual image taken with 9000 series camera

Infrared Cameras Inc

2105 W. Cardinal Dr.
Beaumont, TX 77705
(409) 861-0788 Phone
(866) 861-0788 Toll Free