

ICI | IR-Pad 320 Veterinary



www.infraredcamerasinc.com | sales@infraredcamerasinc.com

INFRARED CAMERAS INC.
2105 W. Cardinal Dr.
Beaumont, TX 77705

Phone: (409) 861-0788
Toll Free: (866) 861-0788

We are IR™

ICI | IR-Pad 320 Veterinary

The ICI IR-Pad 320 Veterinary infrared camera/tablet system is a winning combination for capturing high quality images. Featuring a custom calibration specifically for veterinarian applications, the IR-Pad 320 is useful in preventative and ongoing treatment of animals and pets. This ultra rugged IR-Pad Veterinary infrared camera utilizes a 320x240 high resolution detector to capture all of your thermal images, perfect for Offices, Field Work, or House Calls. The design is unbeatable and built specifically for all needs that a veterinary thermographer may encounter in their critical business. Includes our IR Flash Pro software.



Features

- IR Camera + Tablet System
- Unparalleled Image Resolution
- Widescreen Viewing
- Heavy Duty Tablet Case
- Bluetooth Connectivity
- Indoor/Outdoor Use
- Adjustable Neckstrap and Stand
- IR Flash Touch Strap
- Analysis/Report Building Software
- Portable
- 8 Palettes including B&W

Applications

- Fever Screening
- Injury Discovery
- Pain/ Inflammation
- Equine/ Cattle Health
- Dermatology
- Scientific Research

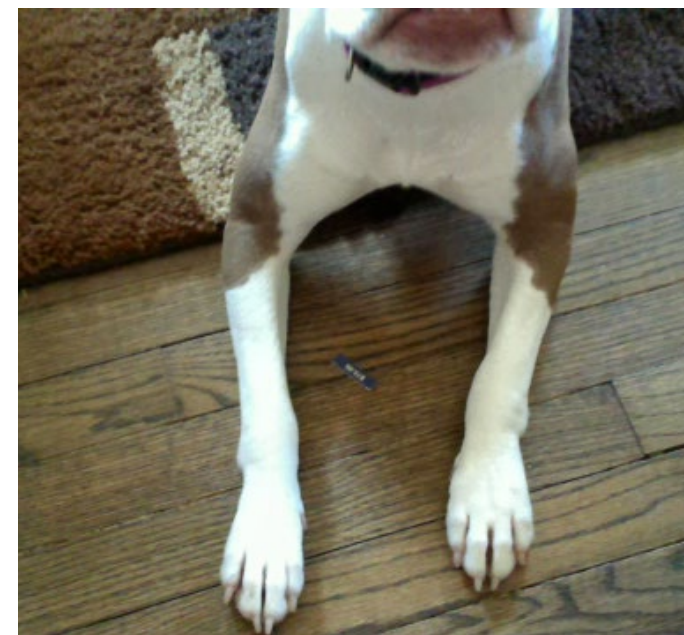
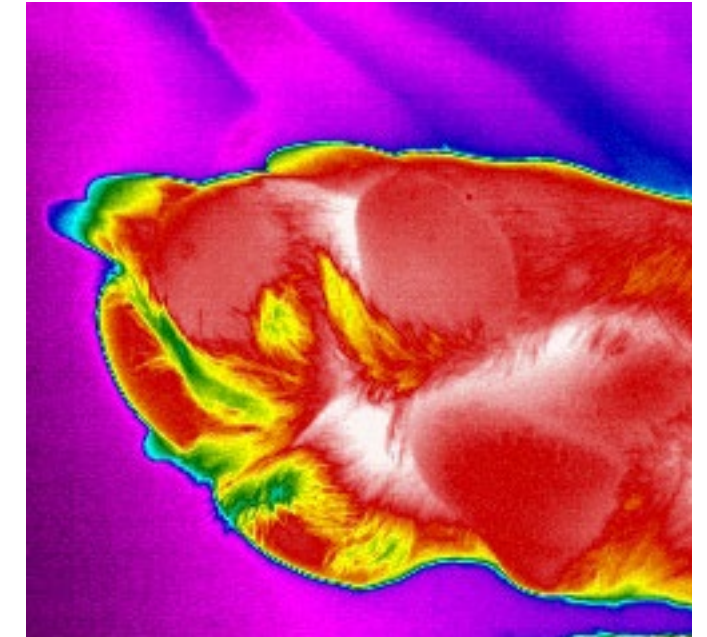
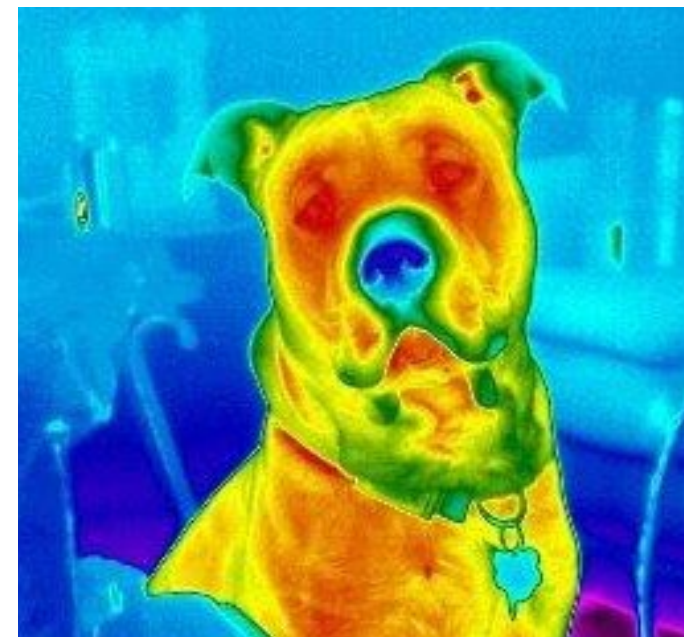
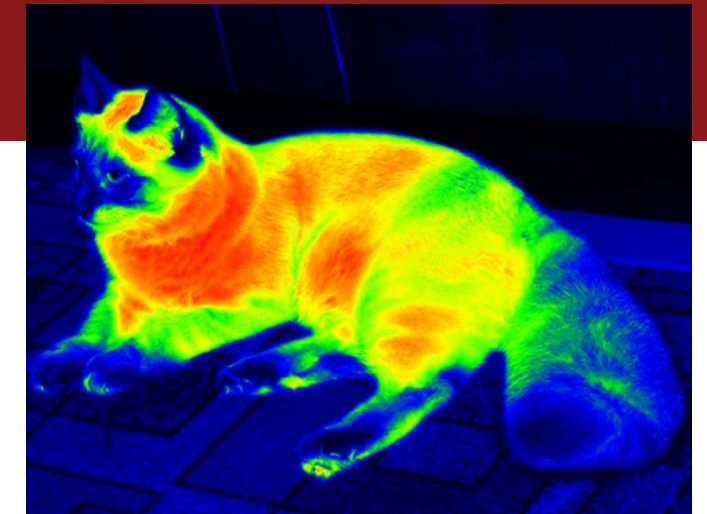
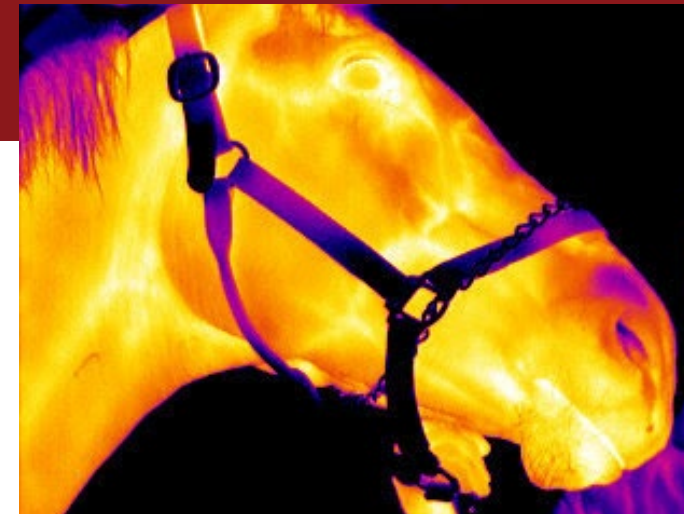
Specifications

- **Detector Array:** UFPA (VOx)
- **Pixel Pitch:** 17 μ m
- **Pixel Resolution:** 320x240
- **Spectral Band:** 7 μ m to 14 μ m
- **Thermal Sensitivity (NETD):** < 0.02 °C at 30 °C (20 mK)
- **Frame Rate:** 60 Hz P-Series or 9 Hz S-Series
- **Dynamic Range:** 14-bit
- **Temp. Range:** -40 °C to 140 °C
- **Operation Range:** -40 °C to 80 °C
- **Storage Range:** -40 °C to 70 °C
- **Accuracy:** \pm 1 °C
- **Pixel Operability:** > 99 %
- 75 G Shock / 4 G Vibration
- **Dimensions (without lens):** 209 x 311 x 19 mm (H x W x D \pm .5 mm)
- **Weight (without lens):** 1400 g
- USB 2.0 for Power & Data
- USB, HD Video Out
- Built in Shutter
- Internal NUC
- **Power:** Built-in, Rechargeable
- **Operating System:** Windows 10
- ICI IR Flash Pro Software

- **Screen Size:** 12"
- **Screen Resolution:** 2160x1440 16:9 (widescreen)
- **Processor:** 4th Gen Intel Core i5
- **Storage:** 128 GB
- **RAM:** 4 GB
- **Touch:** Multi-touch
- Wi-Fi 802.11ac/802.11 a/b/g/n
- Bluetooth® 4.0 Low Energy
- Digital Compass
- **Digital Cameras:** 5 MP Rear Facing Camera, 5 MP Front Facing Camera
- **Video Format:** MP4, > 60 minutes 1280x960 @ 30 fps
- **Video Out:** Micro HDMI
- **Image Format:** JPG
- **Image Polarity:** Iron, White Hot, Black Hot, Rainbow, IR11, IR256 Research, Rainbow Percentage
- Stereo Microphone
- Stereo Speakers w/ Dolby™ Sound
- 3-axis Accelerometers
- 3-axis Gyroscope
- Magnetometer
- Surface Pen
- E-Mail

Options & Accessories

- 5 mm Fixed Focus Lens (58° x 44.5° FOV, +35 g)
- 8 mm Fixed Focus Lens (40° x 30° FOV, +40 g)
- 9 mm Fixed Focus Lens (69° x 56° FOV, +40 g)
- 12.5 mm Manual Focus Lens (50° x 37.5° FOV, +64 g)
- 13 mm Fixed Focus Lens (45° x 37° FOV, +45 g)
- 19 mm Fixed Focus Lens (32° x 26° FOV, +25 g)
- 25 mm Fixed Focus Lens (25° x 20° FOV, +50 g)
- 33 mm Manual Focus Lens (20° x 15° FOV, +100 grams)
- 35 mm Fixed Focus Lens (18° x 14° FOV, +100 g)
- 50 mm Fixed Focus Lens (12.4° x 9.9° FOV, 230 g)
- 60 mm Fixed Focus Lens (10.4° x 8.3° FOV, 460 g)
- 100 mm Fixed Focus Lens (6.2° x 5° FOV, 460 g)



Visual

Infrared