

ICI | S-Series IR Camera



ICI has U.S. FDA 510K Clearance on their ICI P and S Series cameras and IR Flash Software version 1.0. K073581

www.infraredcamerasinc.com | sales@infraredcamerasinc.com

INFRARED CAMERAS INC.
2105 W. Cardinal Dr.
Beaumont, TX 77705

Phone: (409) 861-0788
Toll Free: (866) 861-0788

We are IR™

ICI | S-Series IR Camera

The ICI S-Series IR Camera offers unmatched image sensitivity and accuracy in a 320x240 radiometric imager. With less than 2 in³ in overall dimension the camera fits in the tightest of areas. The ICI S Series IR Camera operates on less than 1 W of power, via a USB 2.0 connection, providing real time radiometric data streamed directly to any desktop, laptop, tablet or embedded system. Windows and Linux software, drivers and SDK are available for any and all custom applications. Integrates into the Sensor Control Module for UAV applications. Includes IR Flash



Features

- Unmatched Image Sensitivity
- UAV Connectivity
- Multi-Device Linking
- Radiometric Data Streaming
- Integrates into Embedded Systems
- Small Size < 2"
- Light Weight
- Low Power < 1 W by USB
- Drivers and SDK Available
- IR Flash version 1.0 Software

Specifications

- **Detector Array:** UFPA (VOx)
- **Pixel Pitch:** 17 μ m
- **Pixel Resolution:** 320x240
- **Spectral Band:** 7 μ m to 14 μ m
- **Thermal Sensitivity (NETD):** < 0.02 °C at 30 °C (20 mK)
- **Frame Rate:** 9 Hz P-Series
- **Dynamic Range:** 14-bit
- **Temperature Range:** -40 °C to 140 °C
- **Operation Range:** -40 °C to 80 °C
- **Storage Range:** -40 °C to 70 °C
- **Accuracy:** \pm 1 °C
- **Pixel Operability:** > 99 %
- 75 G Shock / 4 G Vibration
- **Dimensions (without lens):** 34 x 30 x 34 mm (H x W x D \pm .5 mm)
- **Power:** < 1 W
- **Weight (without lens):** 37 g
- USB 2.0 for Power & Data
- Built in Shutter
- Aluminum Enclosure
- IR Flash version 1.0 Software

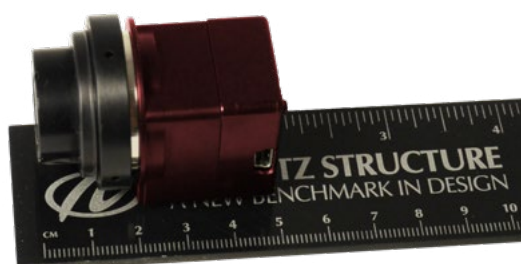
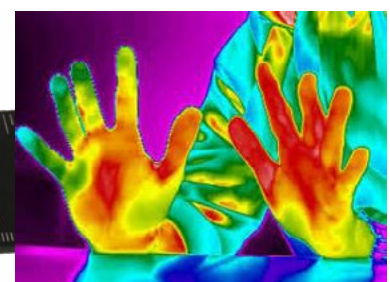
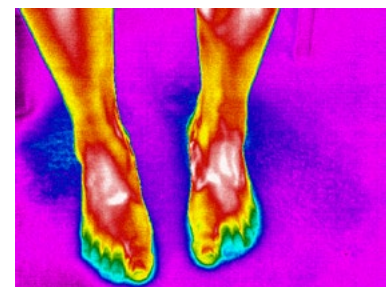
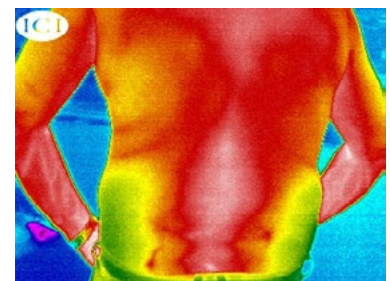
Applications

- Healthcare Robotics
- Radiometric Imaging
- Scientific Research
- Breast Imaging
- Temperature Measurement
- Hospital Healthcare Procedures
- Sub-acute Healthcare Settings
- Airport Screening



Options & Accessories

- 7.5 mm Manual Focus Lens (40° x 30° FOV, +6 g)
- 7.5 mm Athermalized Lens (40° x 30° FOV, +16 g)
- 11 mm Manual Focus Lens (27° x 20° FOV, +20 g)
- 21 mm Manual Focus Lens (15° x 11° FOV, +22 g)
- 19 mm Athermalized Lens (16° x 12° FOV, +36 g)
- 35 mm Manual Focus Lens (9° x 6.7° FOV, +35 g)
- 35 mm Athermalized Lens (9° x 6.7° FOV, +105 g)
- 1/4-20 Bulkhead Mount
- Sensor Control Module



Patent No. 9880552

These systems are intended to be used adjunctively and not as a standalone device.