

ICI | P-Series IR Camera



www.infraredcamerasinc.com | sales@infraredcamerasinc.com

INFRARED CAMERAS INC.
2105 W. Cardinal Dr.
Beaumont, TX 77705

Phone: (409) 861-0788
Toll Free: (866) 861-0788

We are IR™

ICI | P Series IR Camera

The ICI P Series IR Camera is a winning combination for capturing images in 640x480 pixel resolution quality. It is perfect for indoor use and is a superior thermal imaging product for outdoor work environments. The ultra rugged imager uses our custom ICI P Series IR Camera infrared camera to capture all of your thermal images and stores them on a 128GB Hard Drive. The unbeatable design is capable of meeting any medical thermography needs you may encounter in the field of health services. Includes our IR Flash version 1.0 Software.



Features

- IR Camera + Tablet System
- Unparalleled Image Resolution
- Widescreen Viewing
- Heavy Duty Tablet Case
- ICI IR Flash Medical Software
- Bluetooth Connectivity
- Indoor/Outdoor Use
- Adjustable Stand
- Portable

Applications

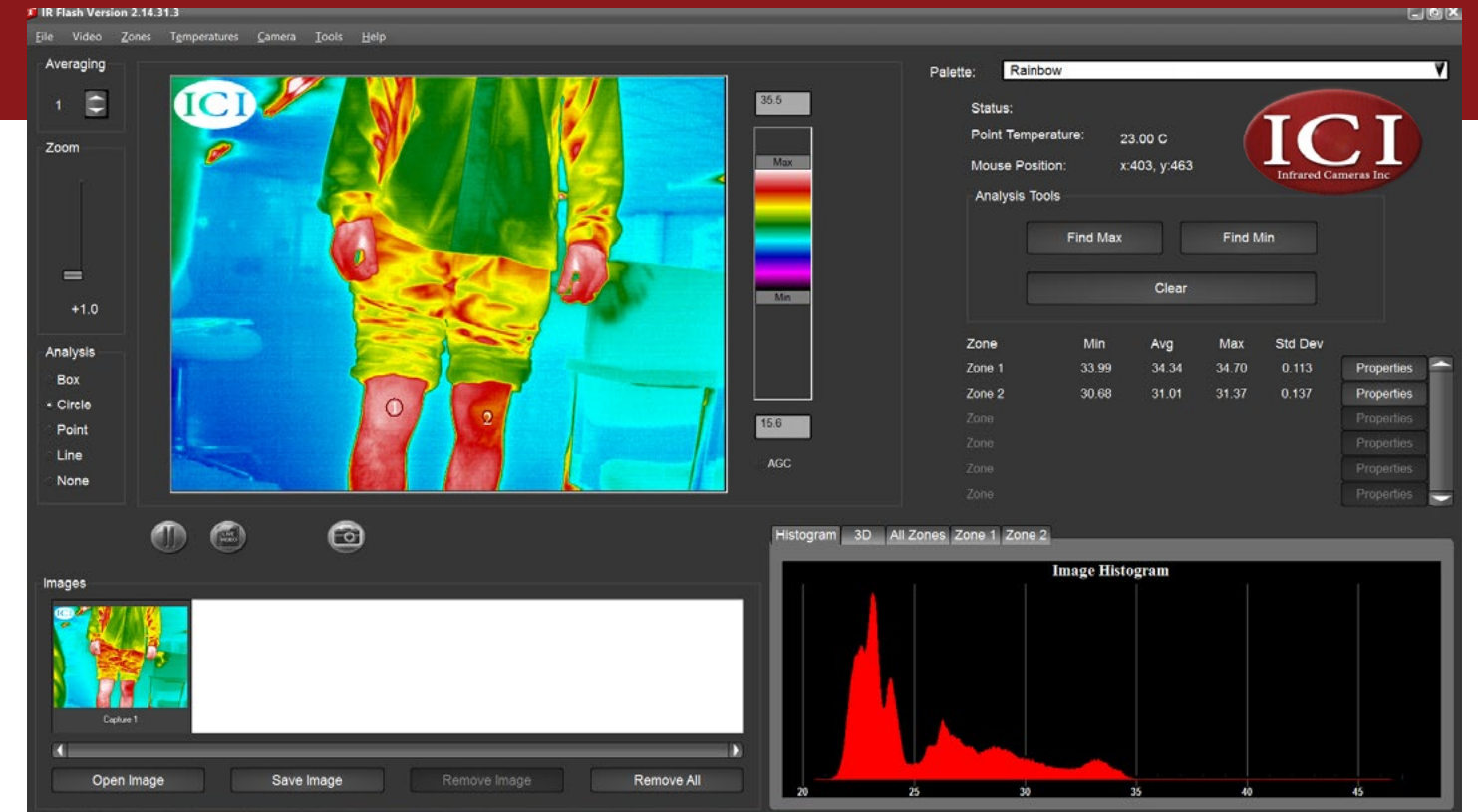
- Skin Temperature Measurement
- Fever Detection
- Health Screening
- Wellness Checkups
- Breast Thermography
- Cancer Screening
- Chronic Disease Monitoring
- Laboratory Medical Testing
- Surgery Monitoring
- Recovery and Follow up visits

Specifications

- **Detector Array:** UFPA (VOx)
- **Pixel Pitch:** 17 µm
- **Pixel Resolution:** 640x480
- **Spectral Band:** 7 µm to 14 µm
- **Thermal Sensitivity (NETD):** < 0.02 °C at 30 °C (20 mK)
- **Frame Rate:** 30 Hz P-Series or 9 Hz S-Series
- **Dynamic Range:** 14-bit
- **Temp. Range:** -40 °C to 140 °C
- **Operation Range:** -40 °C to 80 °C
- **Storage Range:** -40 °C to 70 °C
- **Accuracy:** ± 1 °C
- **Pixel Operability:** > 99 %
- 75 G Shock / 4 G Vibration
- **Dimensions (without lens):** 209 x 311 x 19 mm (H x W x D ± .5 mm)
- **Weight (without lens):** 1400 g
- USB 2.0 for Power & Data
- USB, HD Video Out
- Built in Shutter
- Internal NUC
- **Power:** Built-in, Rechargeable
- **Operating System:** Windows 10
- ICI IR Flash Version 1.0 Software
- **Screen Size:** 12"
- **Screen Resolution:** 2160x1440 16:9 (widescreen)
- **Processor:** 4th Gen Intel Core i5
- **Storage:** 128 GB
- **RAM:** 4 GB
- **Touch:** Multi-touch
- Wi-Fi 802.11ac/802.11 a/b/g/n
- Bluetooth® 4.0 Low Energy
- Digital Compass
- **Digital Cameras:** 5 MP Rear Facing Camera, 5 MP Front Facing Camera
- **Video Format:** MP4, > 60 minutes 1280x960 @ 30 fps
- **Video Out:** Micro HDMI
- **Image Format:** JPG
- **Image Polarity:** Iron, White Hot, Black Hot, Rainbow, IR11, IR256 Research, Rainbow Percentage
- Stereo Microphone
- Stereo Speakers w/ Dolby™ Sound
- 3-axis Accelerometers
- 3-axis Gyroscope
- Magnetometer
- Surface Pen
- E-Mail

Options & Accessories

- 12.5 mm Manual Focus Lens (50° x 37.5° FOV, +64 g)
- 13 mm Fixed Focus Lens (45° x 37° FOV, +45 g)
- 19 mm Fixed Focus Lens (32° x 26° FOV, +25 g)
- 25 mm Fixed Focus Lens (25° x 20° FOV, +50 g)
- 30 mm Manual Focus Lens (20° x 15° FOV, +100 grams)
- 35 mm Fixed Focus Lens (18° x 14° FOV, +100 g)
- 50 mm Fixed Focus Lens (12.4° x 9.9° FOV, 230 g)
- 60 mm Fixed Focus Lens (10.4° x 8.3° FOV, 460 g)
- 100 mm Fixed Focus Lens (6.2° x 5° FOV, 460 g)



Actual images using ICI P Series IR Camera and our IR Flash version 1.0 Software.

